

# THE BATTLE FOR WESTERN NEW YORK

**View from WNY:** “The adjoining wetland areas in Orleans, Genesee, and Niagara Counties total more than 20,000 acres and comprise what may be **the most productive and useful wildlife and recreational inland wetland complex in the eastern half of the United States.**”

- Robert Perry, DEC wildlife manager; principal force behind the INWR

**View from our political leaders:** A Buffalo-Rochester-Syracuse ‘semi-conductor corridor’ . . .

Buffalo!=====Rochester!=====Syracuse!

. . . a line on a map anchored at its west end by a dream: a 1,200 acre, government-sponsored, industrial complex called “STAMP” or Science, Technology and Advanced Manufacturing Park with the abstract promise “to turn the economy of WNY and upstate NY around.” (BN 3/3/2024)

**For who(m)?**

**Let’s take a look at what’s on the line.**

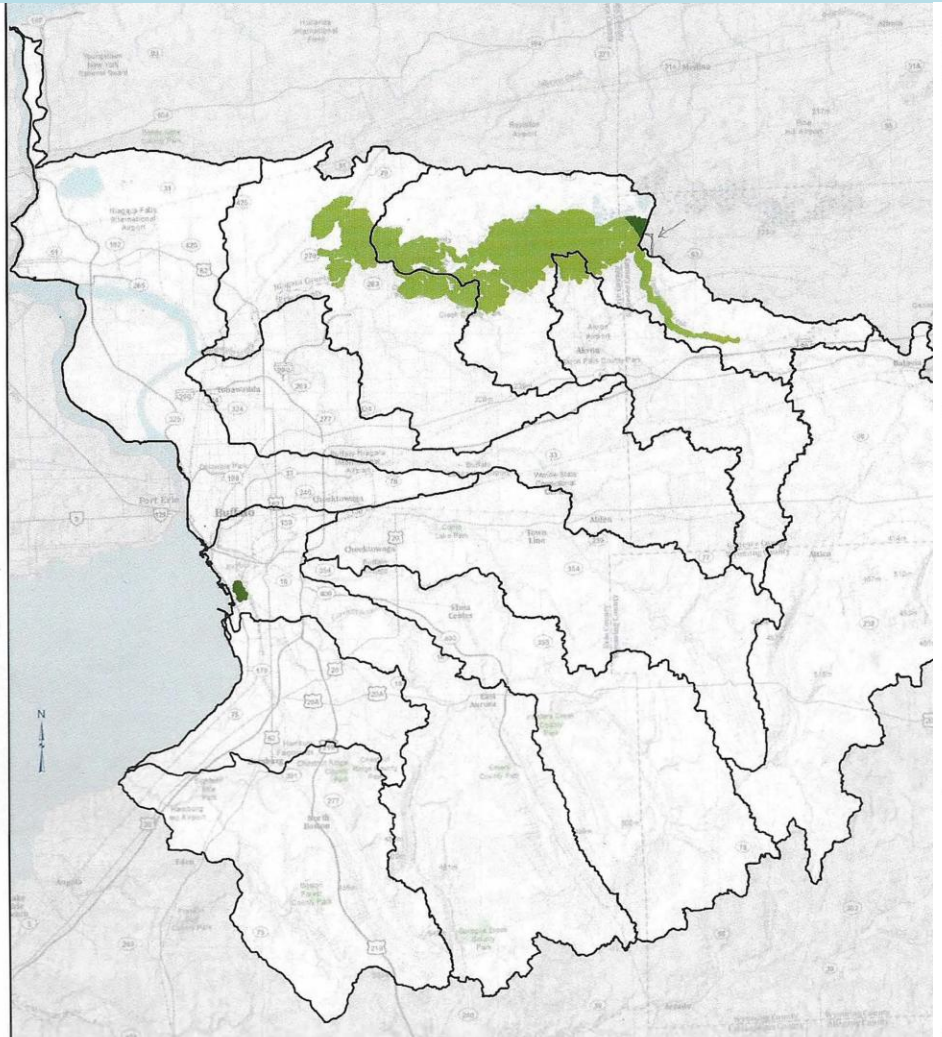
---

Margaret Wooster for  
WNYEA Annual Congress, March 26, 2025



Short-eared owl—Endangered in NYS

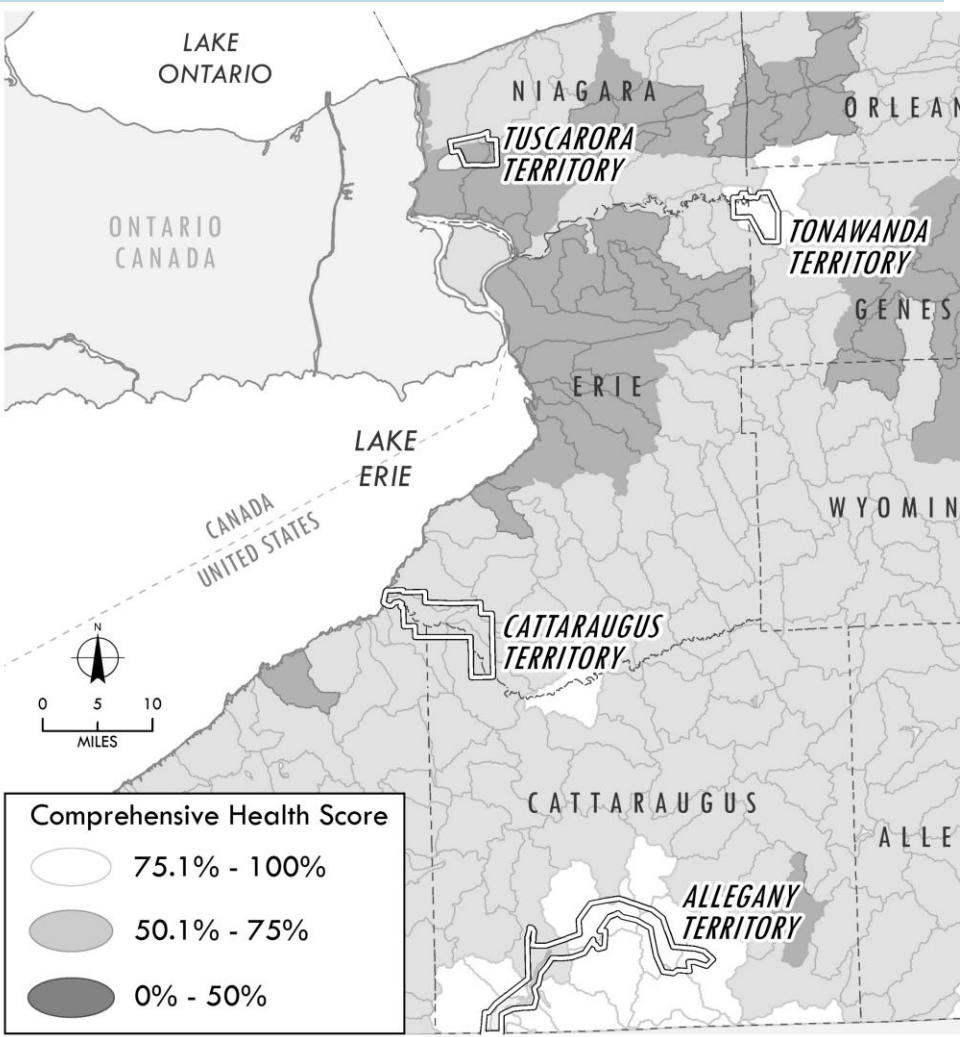
**Alabama Swamp is a remnant of the “6<sup>th</sup> Great Lake”—glacial Lake Tonawanda, and part of a uniquely undisturbed “State-significant floodplain complex.” (NYS Natural Heritage Program)**



**Freshwater Blueprint Data Series:  
FLOODPLAIN COMPLEXES - PERCENT NATURAL COVER**  
NIAGARA RIVER WATERSHED

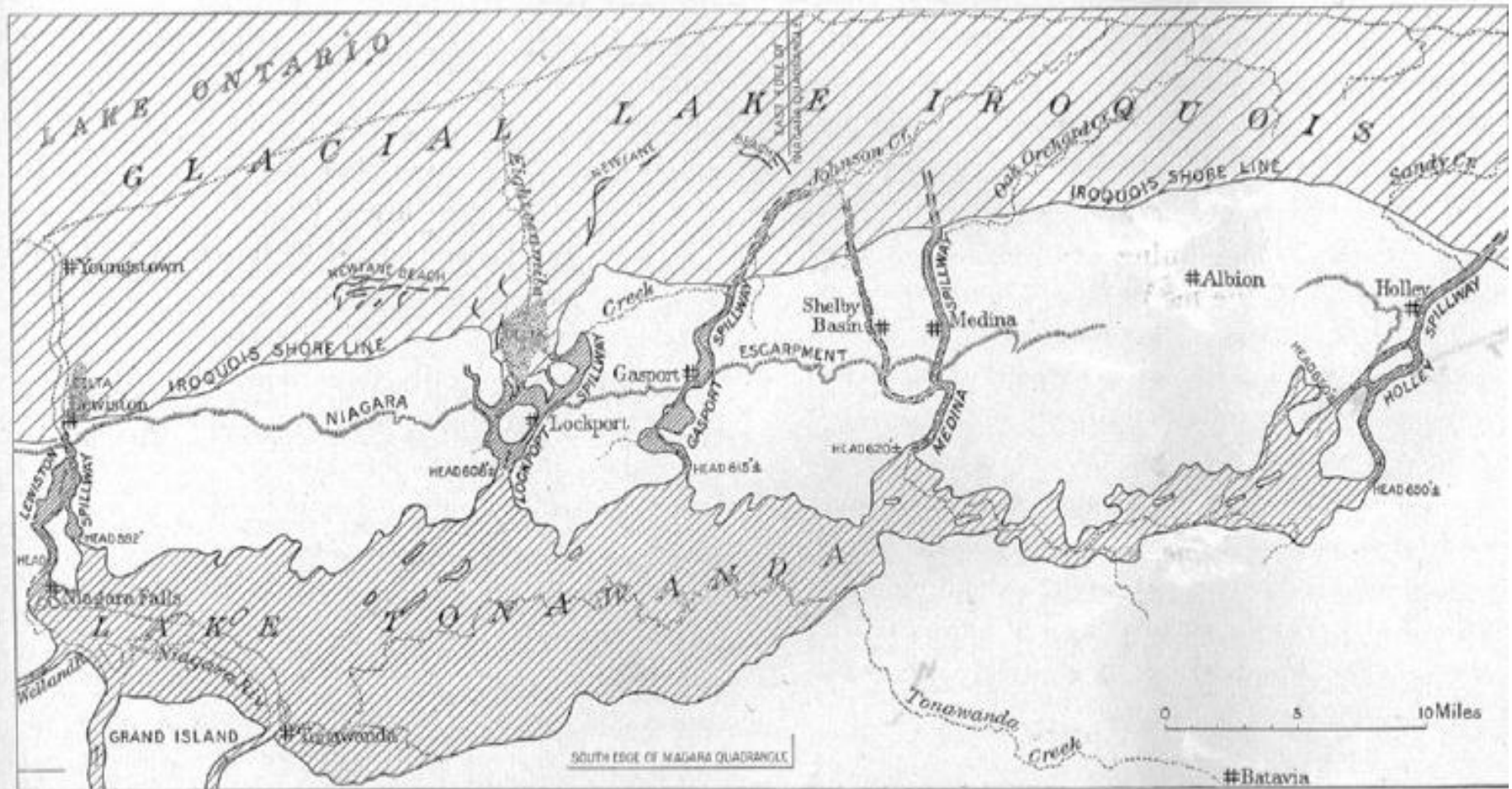
Percent Natural Cover  
 15% - 75%  
 76% - 100%

0 2.5 5 10 15 20 Miles



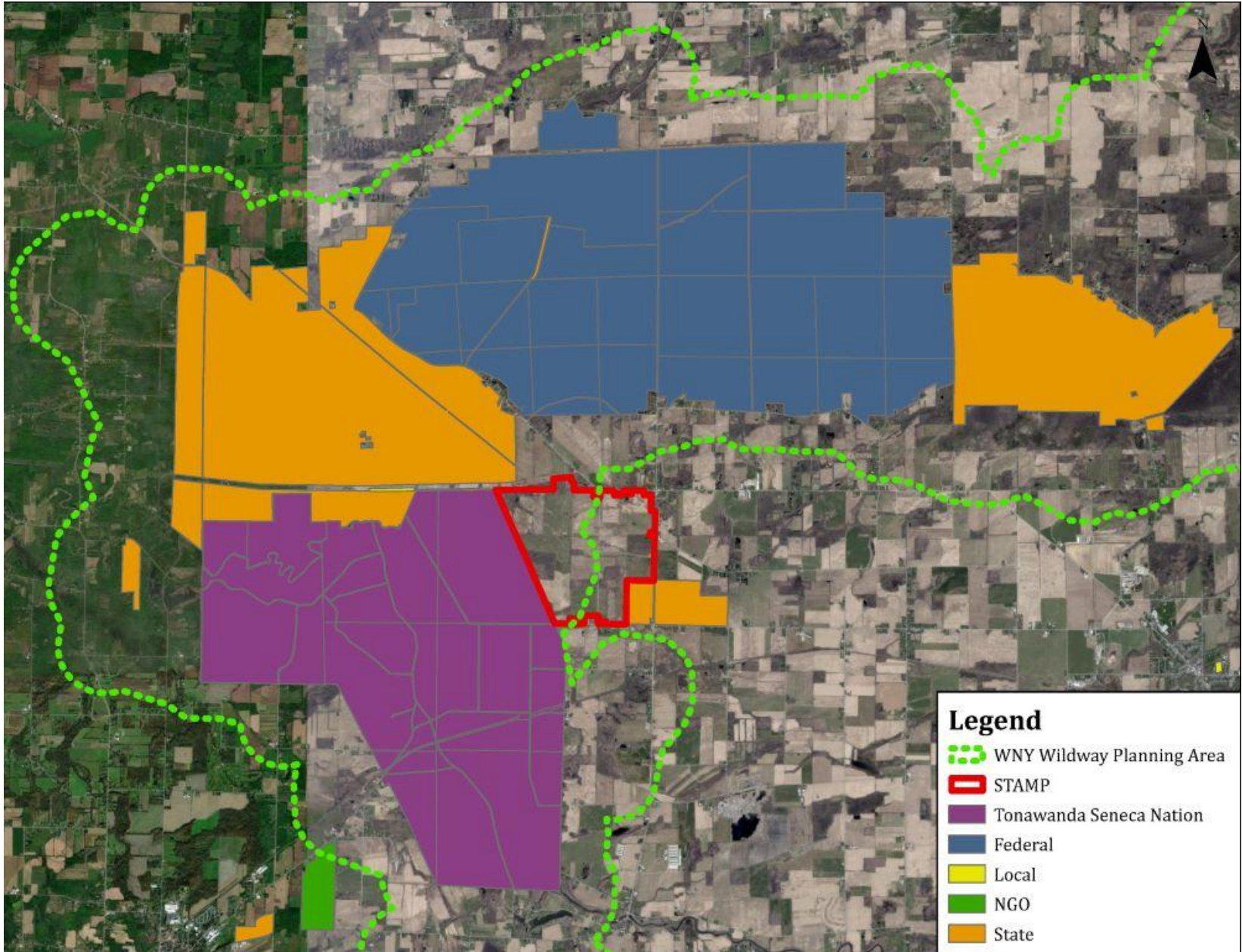
**It helps supply the Tonawanda Seneca Nation, the Iroquois National Wildlife Refuge and the STAMP site with a relatively rare WNY supply of high-quality surface and groundwater.**  
**- NHP: NYS Riparian Opportunity Assessment, 2018**

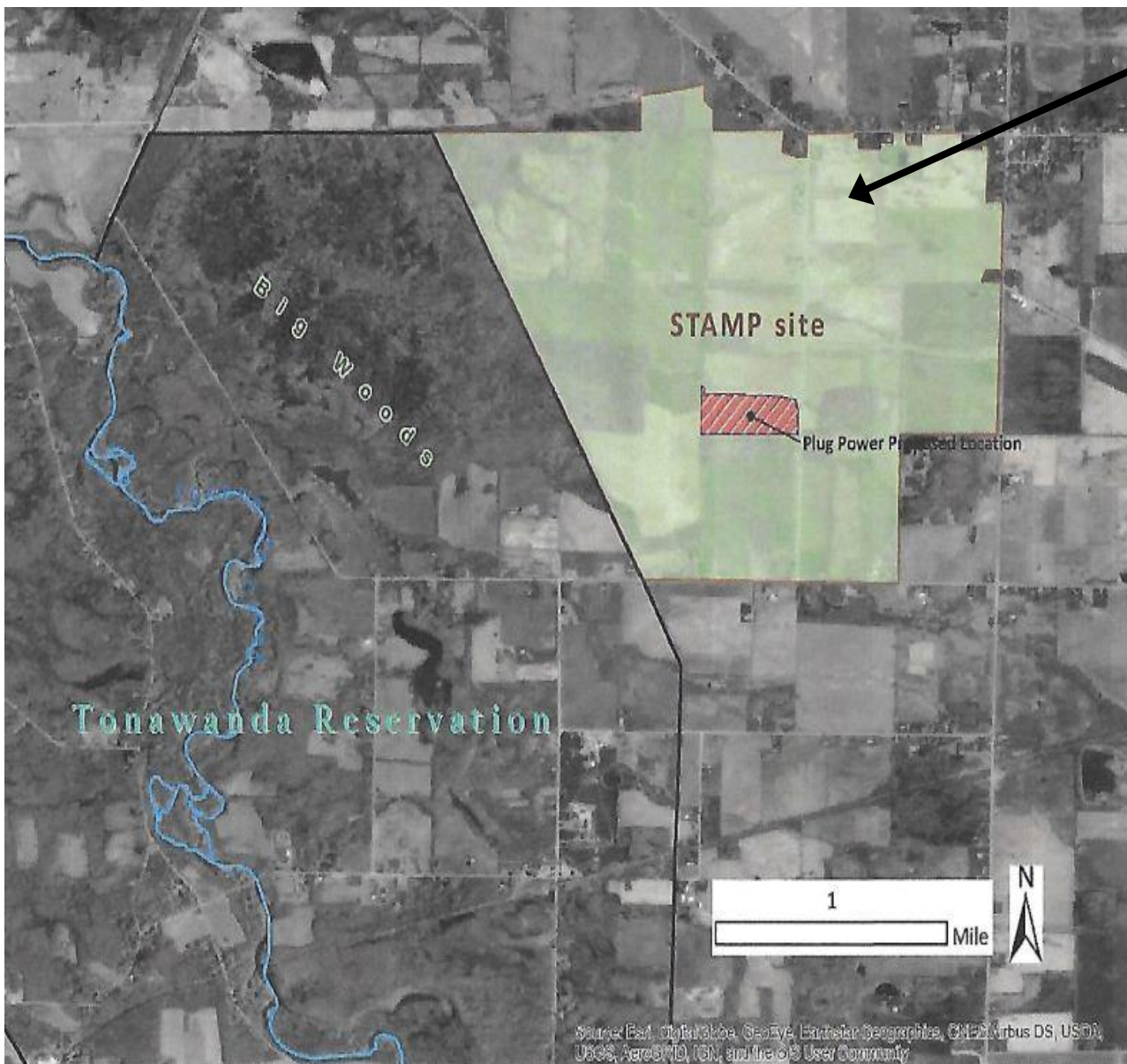
Glacial Lake Tonawanda left a legacy of wetlands, good water quality, globally important wildlife habitat and climate resilience.



Sketch map showing Lake Tonawanda and spillways from it to glacial Lake Iroquois.

It lies at the heart of an Eastern US migration route made up of federal, state and Indigenous protected lands for plants & animals responding to climate change and habitat loss.





Here, the Genesee County Economic Development Center (GCEDC) acquired 1,262 acres of habitat (“undeveloped farmland”) to build STAMP with the intent to access federal subsidies for microchip fabrication.

After 10-15 years, that still has not happened.

A State smart growth study called STAMP “a poster child of location inefficiency” as it is many miles from the labor force, markets and infrastructure it requires.

In July 2023 the GCEDC received a “Full Campus Incidental Take Permit” despite the presence of NYS-endangered and threatened species known to occupy the site and despite affidavits on the cultural importance of the Big Woods to Haudenosaunee communities across the state.

# The Tonawanda Seneca Nation continues to oppose STAMP

*“. . . the Nation objects to the pipeline, to the wastewater treatment facility to which it will be connected, and to the industrial manufacturing projects proposed to be sited adjacent to the nation. We do not want our Territory, people, or future generations to be burdened by the negative impacts of these projects, particularly since no studies have been conducted to determine the scope of these impacts.”*

- Council of Chiefs to US Secretary of Interior, 2/22/2022

But STAMP continues to build, permit by permit, hearing by hearing, even as opposition mounts . . .



May 11, 2023: A public hearing on STAMP’s request for a permit to “take”(destroy) habitat occupied by endangered species in NYS. Of the 200 people who attended, all strongly opposed this permit. In July DEC Region 8 approved it w/o amendment. -Photo: Orleans HUB

**10/13 2023 “Problematic Pipeline”**  
This Buffalo News editorial board published this editorial after drilling for the STAMP wastewater pipeline resulted in 3 spills of toxic drilling fluids into the INWR—federally protected land.  
*“Can a 9-mile pipeline be safely constructed through the Iroquois National Wildlife Refuge? Is it possible for an industrial park to be a good environmental neighbor in an area known for its waterfowl and rural wetlands? “If there’s another way, Genesee County EDC should find it.”*

**IS THERE ANOTHER WAY ?**