

LET'S RETHINK STAMP!

Help protect "the most productive inland wetland complex in the eastern half of the U.S."*

What is STAMP?

Genesee County Economic Development Center (GCEDC) acquired 1,262 acres of vital habitat to build STAMP (Science & Technology Advanced Manufacturing Park), a mega industrial site. So far, "Plug Power," a maker of hydrogen fuel cells, and Edwards Vacuum are the only tenants who have begun work on site.

Importance of this site:

- Clean and abundant water
- Environmental Services
 - Part of an almost 30,000-acre complex of wetlands, grasslands and forest including the Iroquois National Wildlife Refuge (INWR)
 - Supports over 140 local bird species and global migrants including 16 species at risk
 - Natural beauty
- Intact cultural and natural history
 - Includes glacial Great Lake Tonawanda - a major component of these habitats and of our WNY water cycle
 - The Tonawanda Seneca Nation & the "Big Woods" used by Haudenosaunee across the State for food and medicine.

Impacts from STAMP:

- Major loss of WNY habitat from site development plus many more miles of new infrastructure including:
 - A water pipeline for over 6 million gallons per day from Niagara
 - Roads for >600 diesel truck and >800 car trips/day
 - A wastewater pipeline already leaking many gallons of drilling fluid into the INWR
 - Power lines, lights, noise, traffic, wildlife mortality
- Taxpayer dollars channeled towards industrializing and privatizing this uniquely valuable natural location

*Robert Perry, DEC wildlife mgr. and principal force behind the INWR, c. 1955

SOME OF MANY SPECIES AT RISK

Short-eared Owl



Northern Harrier



Golden Plover



Cerulean Warbler

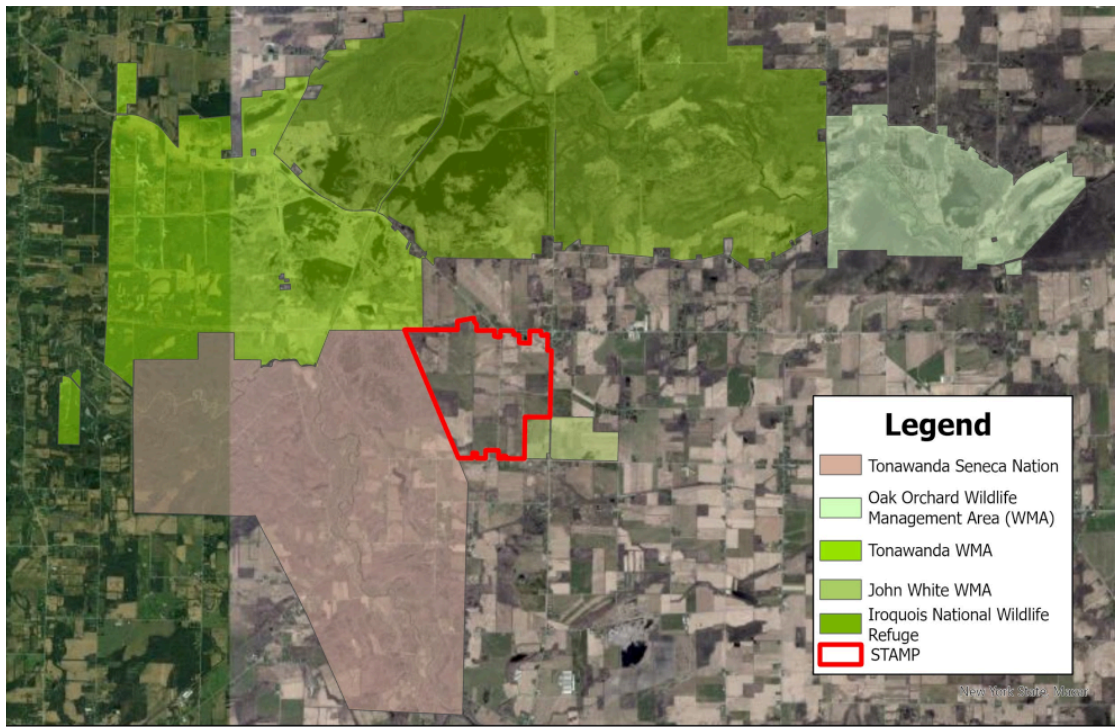


What Can We do?

Write letters to local, state and federal politicians expressing your concerns. Let them know that in this day of climate change and species extinctions, this is the least suitable place in Western New York to industrialize.

Send comments/editorials to local media including (see WNYEA website for more):

Rochester Democrat and Chronicle	Orleans Hub
Lockport Union-Sun Journal	Albany Times Union
Batavia Daily News	The Buffalo News



Several groups have identified this area as part of an "Eastern Wildway" - a protected corridor of natural land supporting wildlife migration across the eastern U. S.

For more information:

Western New York Environmental Alliance:

email: wnyeaorg@gmail.com

website: www.wnyea.org - See "Campaigns"

facebook: www.facebook.com/wnyea.org

Allies of the Tonawanda Seneca Nation:

email: alliesoftsn@gmail.com

website: alliesoftsn.weebly.com

**FOR MORE
SCAN HERE:**

